



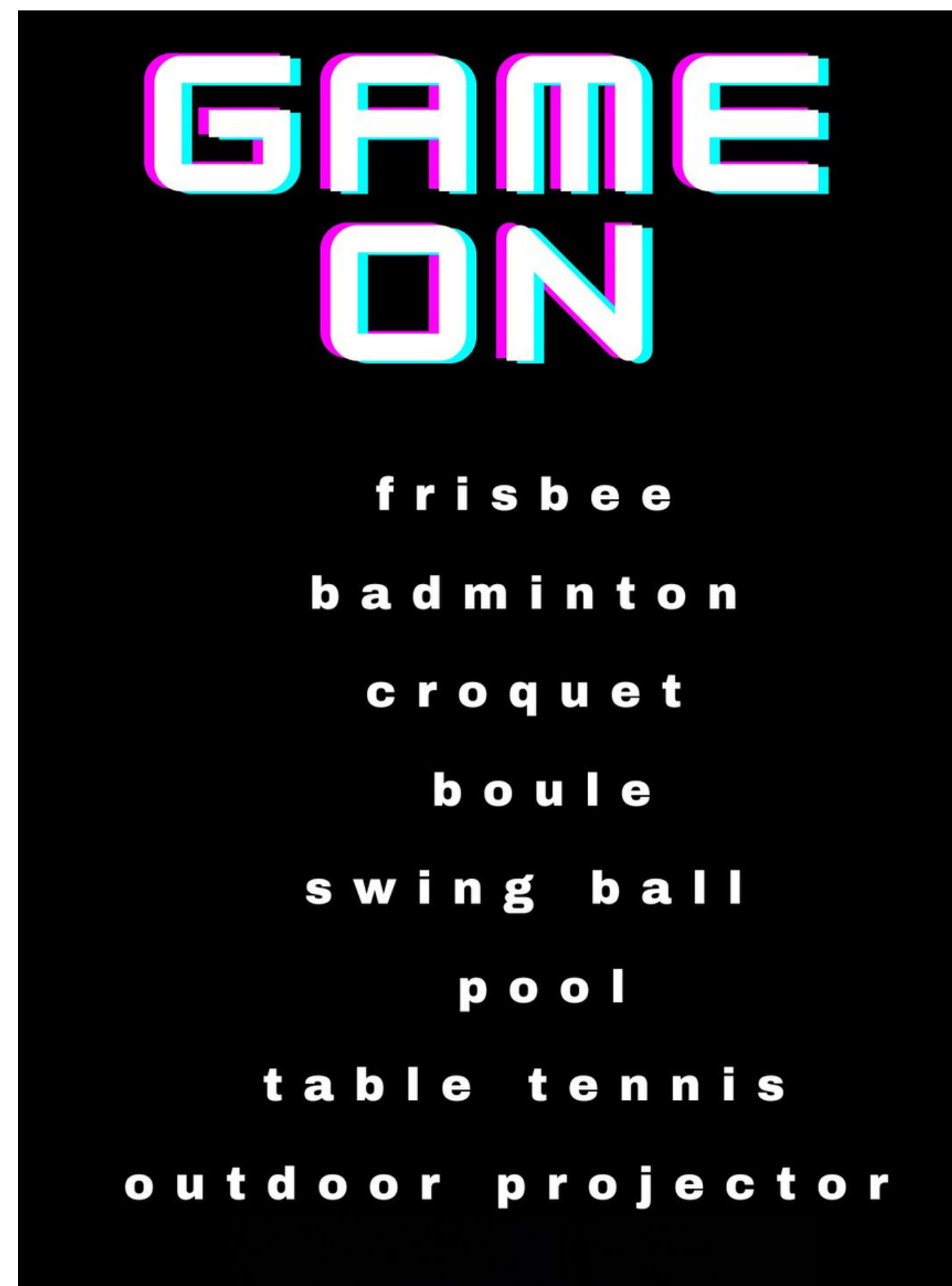
Starlink WIFI: Nova_A38 Password bean9624


Checkout 11am

Taxi? Handsome Cabs or Discount Cars 01522 545352
Takeaway Delivery? Call Galaxy Pizza House 01522 752626

No power? Reset RCDs on power points (UK limit 3600 watts per unit)

Help? Message or 07700 182082 or 07887 708419





PARKING CLOSE TO YOUR UNIT? YOU ARE NEVER MORE THAN 60 METRES FROM YOUR UNIT HERE, AND NORMALLY WITHIN 30 METRES.

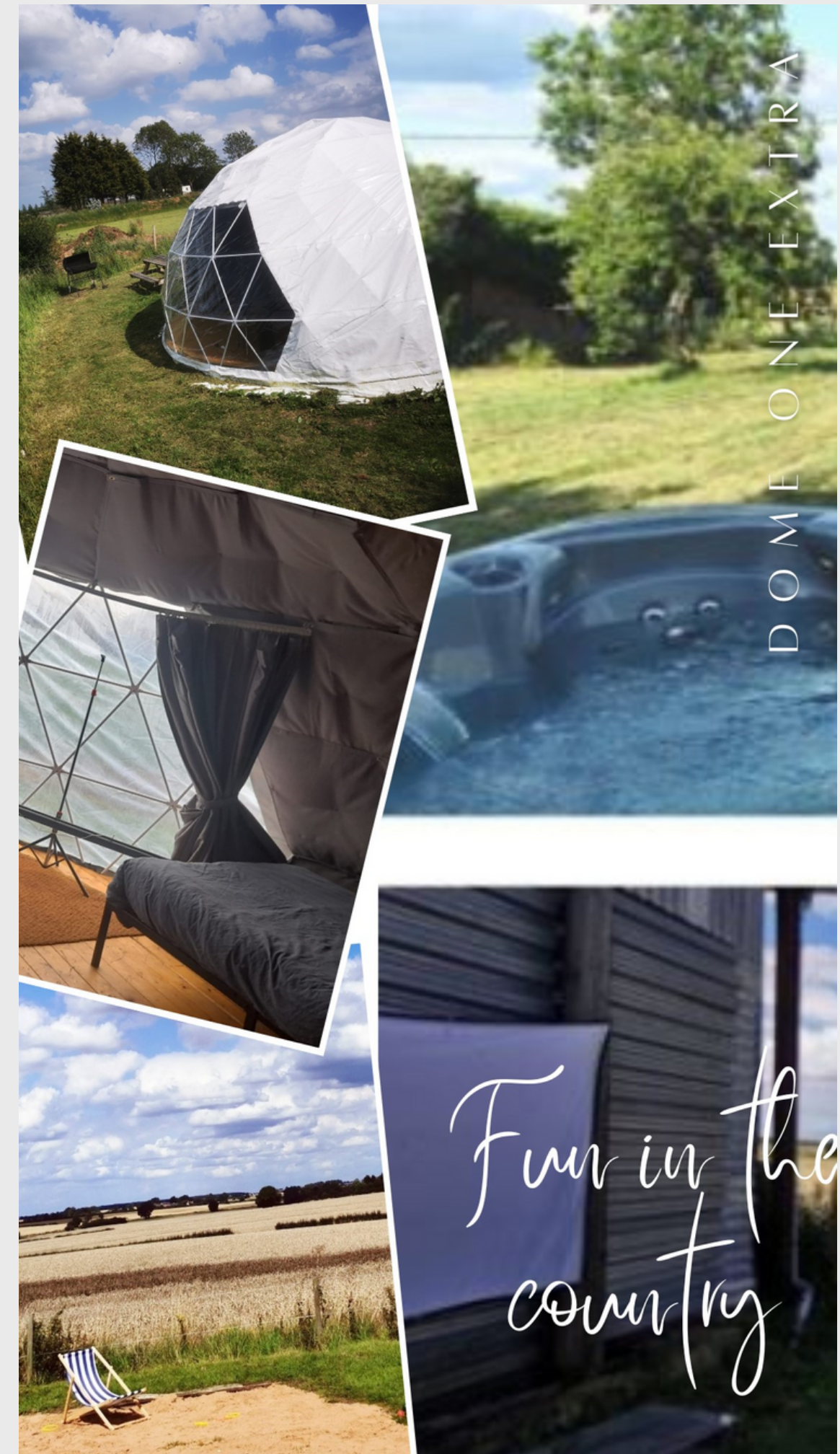
THIS IS A PLACE TO UNWIND, ENJOY A CAMP FIRE, NOT WORRY ABOUT BEING RUN OVER. AND FOR THOSE THAT DO STILL TRY AND DRIVE ON THE MAIN FIELDS, LAST YEAR OVER 10 VEHICLES HAD TO BE RESCUED – SOME TAKING UPTO 4 HOURS.

PARK IN THE TWO DESIGNATED PARKING AREAS ONLY

BE RESPECTFUL OF OTHER GUESTS

**DRINKING WATER IS
FOUND ON THE OUTSIDE
OF WOODEN HUT
SHOWER BLOCK**

**BBQ: WE OPERATE A PLEASE
LEAVE IT AS YOU EXPECT TO
FIND IT POLICY**



**UK GLAMPING RULES LIMIT
THE SUPPLY TO ANY UNIT
TO 3.6KW. IF YOU USE OVER
THIS, THE ELECTRIC WILL
TRIP REQUIRING A RESET.**

**IF YOU HAVE BROUGHT
YOUR OWN HEATER, MAKE
SURE YOU USE THIS
INSTEAD OF OURS, NOT IN
ADDITION.**



COUNTRYLIFE SUNSET

**A STUNNING SUNSET
OVER BEAUTIFUL
COUNTRY FIELDS**

BULLINGTON IS ONE OF THE LAST REMAINING HOMESTEAD'S IN ENGLAND. THAT MEANS IT IS NOT ENCLOSED – YOU CAN WALK FROM ANY ONE PART OF THE SITE TO ANOTHER WITHOUT A COMPLETE FENCE.

WITH MORE SPACE PER UNIT THAN AT AN AVERAGE UK DETACHED HOUSE PLOT, THERE IS MORE THAN ENOUGH SPACE FOR PRIVACY WITHOUT UNNECESSARY BARRIERS

AUSTRALIA TEACHES MATESHIP IN SCHOOL – ENGLAND TAUGHT 'STRANGER DANGER'. THEY BOOM, WE DECLINE.



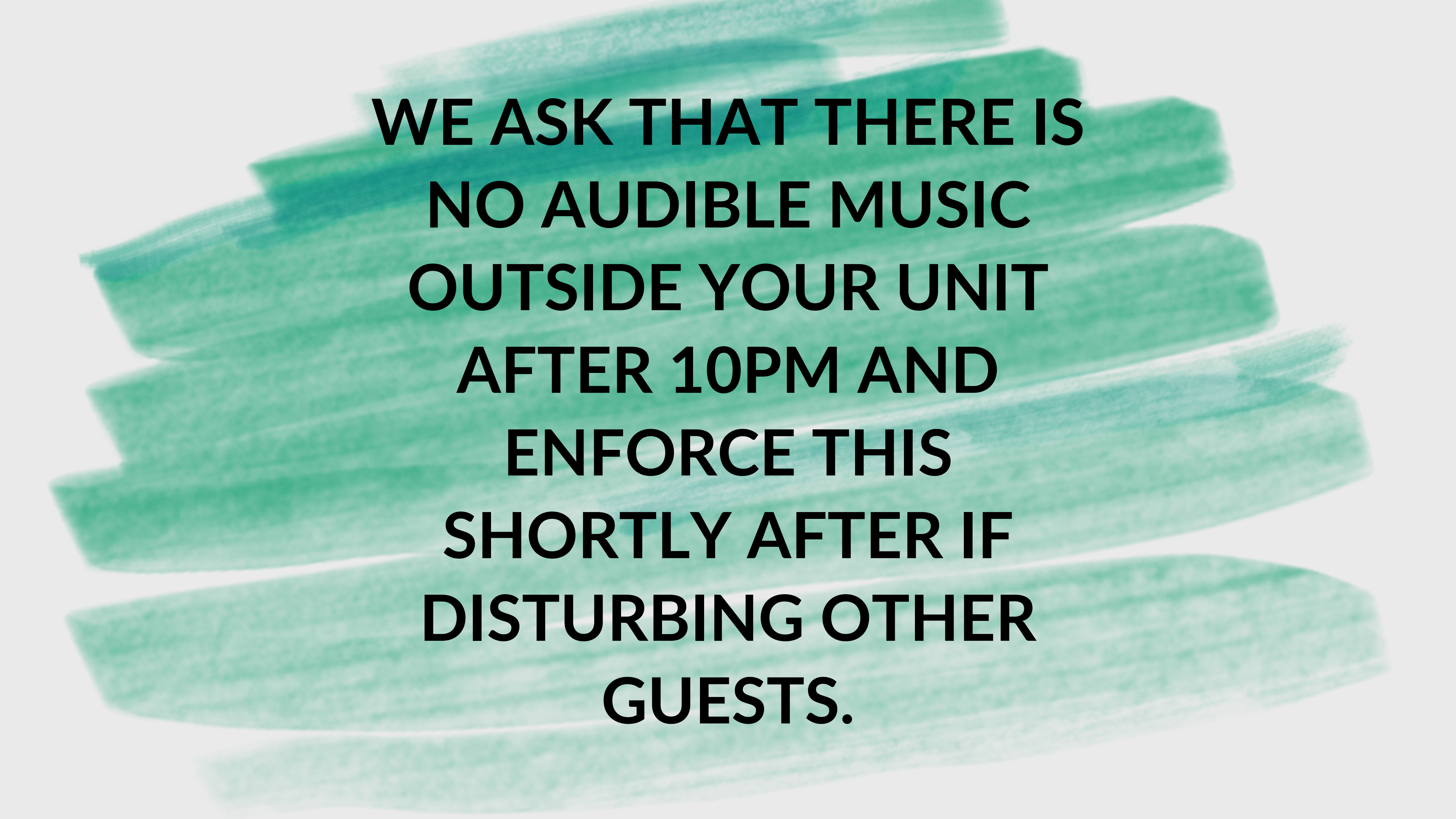
**PUBLIC TRANSPORT: HOURLY
BUSES RUN FROM THE LOCAL
LAYBYS TO BOTH LINCOLN
STATION AND SKEGNESS FROM
AROUND 0720 TO 2120PM.**

**GOOGLE MAPS IS THE BEST
RESOURCE FOR CHECKING THE
TIMES.**

**IF A TAXI IS NEEDED, BOTH
HANDSOME CABS AND DISCOUNT
CARS BUT NEED PREBOOKING**

**PLEASE DONT LET ANY
RUBBISH END UP IN THE
FARMERS FIELDS - OR IT
WILL BE IN THE HUMAN
FOOD CHAIN**

**UPON CHECK OUT PLEASE
PLACE RUBBISH IN THE
MAIN BIN BY GATE 1**

The background of the image consists of several horizontal, overlapping brushstrokes in a teal or seafoam green color. The strokes vary in opacity and length, creating a layered, artistic effect. The text is centered over these strokes.

**WE ASK THAT THERE IS
NO AUDIBLE MUSIC
OUTSIDE YOUR UNIT
AFTER 10PM AND
ENFORCE THIS
SHORTLY AFTER IF
DISTURBING OTHER
GUESTS.**

IT'S THEIR SPACE. NOT YOURS. THIS IS AN AREA WHERE WILDLIFE LIVES. ITS CALLED THE COUNTRYSIDE. LINCOLNSHIRE PRODUCES 25% OF ALL THE FOOD THE COUNTRY EATS. AND EVERY FLY, RABBIT AND VOLE HAS A VITAL PART IN THE ECO SYSTEM THAT IS NEEDED TO MAKE SURE HUMANS HAVE FOOD TO EAT. SO USE YOUR COMMON SENSE- CHEESY PIZZA LEFT ON THE FLOOR OF A UNIT MAY ATTRACT MICE: EAT OUTSIDE WHERE POSSIBLE, THROW YOUR RUBBISH AWAY AFTERWARDS. IN THE SUMMER WHEN DOORS TEND TO BE OPEN MORE, SOME FLIES MAY GET INTO THE UNITS. IF THIS IS A BIG ISSUE, FLY SPRAY CAN BE PROVIDED OR PURCHASED FROM MOST LOCAL SHOPS.

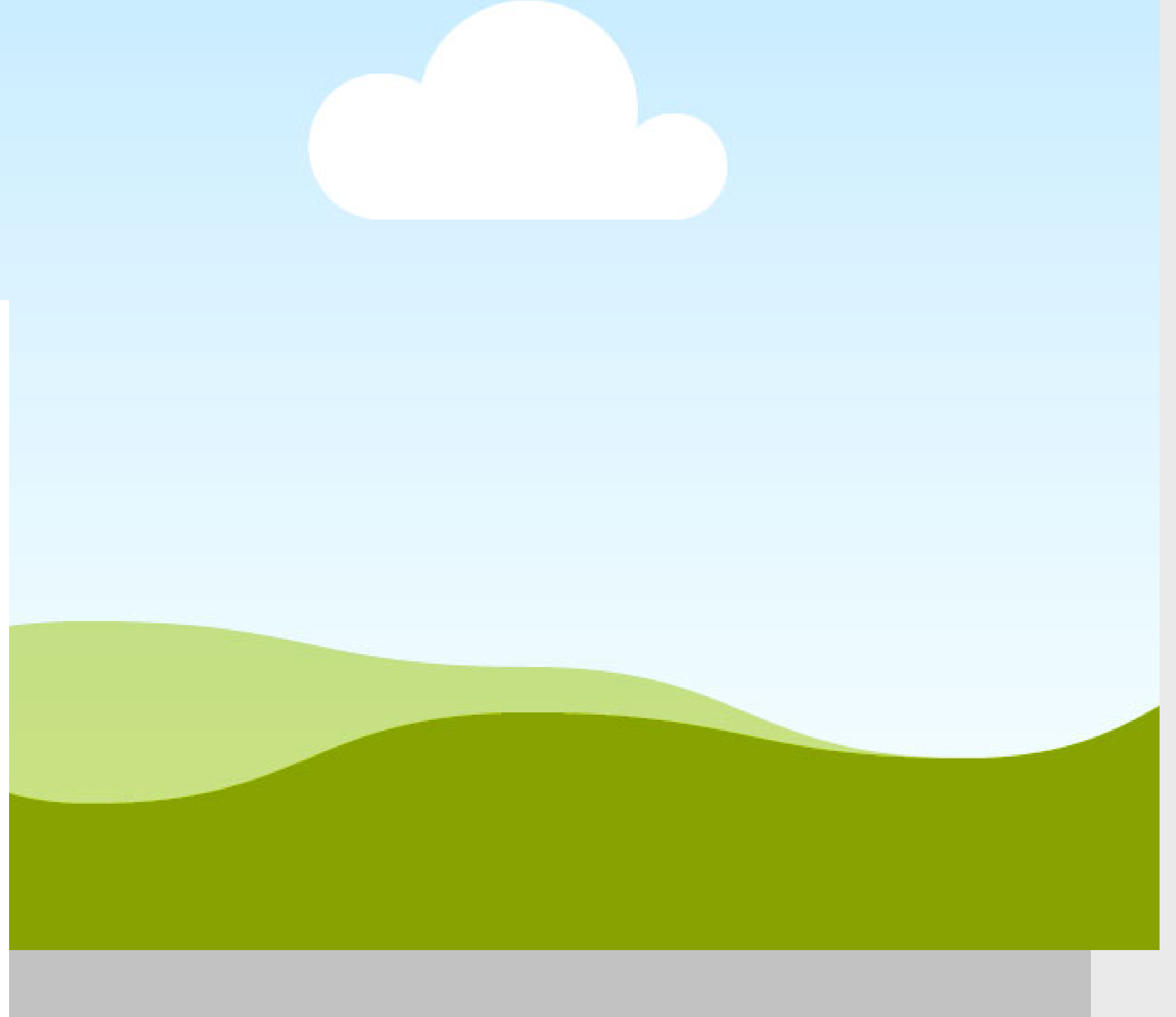
**DOG FRIENDLY DOESN'T
MEAN DOGS GO WILD**



**MOST UNITS HAVE MESH
WINDOWS- ITS NOT
WATERPROOF, SO IF
YOU HAVE A WINDOW
OPEN AND THERE IS A
STORM- WATER WILL
GET INSIDE. WE ARE
TELLING YOU THIS AS WE
HAVE LEARNT COMMON
SENSE ISN'T COMMON!**



**WHEN SOMETHING ISN'T PERFECT,
OR NEEDS ATTENTION BEYOND
WHAT IS REASONABLE FOR YOU TO
DO, PLEASE GIVE US THE
OPPORTUNITY TO PUT IT RIGHT. NO
REFUNDS WILL BE ISSUED WITHOUT
US BEING INFORMED OF ANY ISSUES
IN PERSON OR VIA THE BOOKING
PLATFORM/PHONE AND US BEING
GIVEN THE OPPORTUNITY TO PUT IT
RIGHT OR SWAP UNIT.**



DOMES IN THE UK IN WINTER ISN'T LIKE A SUMMER HOLIDAY TO SPAIN. IT MAYBE COLD, IT MAY BE WET. ITS YOU THAT MAKES THEM SPECIAL. THE JOKES, THE MEMORIES SHARED OVER A BONFIRE, THE HUG OF A FAMILY MEMBER AFTER A WALK IN THE RAIN, THE SIP OF HOT CHOCOLATE AS YOU TEACH A GRANDCHILD TO TOAST MARSHMALLOWS.

WE WILL TRY TO SUPPORT YOU WITH HEATING, BLANKETS, EXTRA BEDDING ETC, BUT ITS YOUR ENERGY, YOUR PASSION, YOUR POSITIVITY, YOUR MOVEMENT THAT WILL ENSURE YOU ENJOY THE TRIP. IF YOU SIMPLY COME HERE TO SIT IN THE UNIT, YOU WONT EVER UNDERSTAND WHAT MAKES EVERYTHING HERE SO SPECIAL TO SO MANY PEOPLE.



THECOUNTRYLIFE

I'd dare to make more mistakes next time.
I'd relax, I would limber up.
I would be sillier than I have been this trip.
I would take fewer things seriously.
I would take more chances.

I would climb more mountains and swim more rivers.
I would eat more ice cream and less beans.
I would perhaps have more actual troubles,
but I'd have fewer imaginary ones.

You see, I'm one of those people who live
sensibly and sanely hour after hour,
day after day.

Oh, I've had my moments,
And if I had it to do over again,
I'd have more of them.
In fact, I'd try to have nothing else.
Just moments, one after another,
instead of living so many years ahead of each day.

I've been one of those people who never goes anywhere
without a thermometer, a hot water bottle, a raincoat
and a parachute.
If I had to do it again, I would travel lighter than I have.

If I had my life to live over,
I would start barefoot earlier in the spring
and stay that way later in the fall.
I would go to more dances.
I would ride more merry-go-rounds.
I would pick more daisies.

Nadine Stair,
85 years old.

**NEAREST SHOPS AND RESTAURANTS: WRAGBY (3 MILES AWAY)
FOR ADAM AND EVE GASTROPUB, THE IVY PUB AND
RESTAURANT, CO-OP AND PREMIER FOR FOOD SHOPPING, FISH
AND CHIP SHOP, GIFT SHOP, LATE NIGHT PIZZA/BURGER/KEBAB
TAKEAWAY**

**COMFORT BREAKFAST / LUNCH ON LAYBYS TO LEFT AND RIGHT
OF PROPERTY (1 MIN WALK) SERVING FROM 7AM TO 3PM TEA,
COFFEE, BURGERS, BREAKFASTS ETC**

**NEAREST PUB: THE GEORGE, LANGWORTH
(2 MILES AWAY)**

**MAJOR SUPERMARKET: TESCO EXTRA, WRAGBY ROAD
(TOWARDS LINCOLN – 10 MINS DRIVE)**

**BURTON WATERS IS A MARINA 20 MINS DRIVE AWAY WITH A
SELECTION OF HIGH QUALITY PUBS AND RESTAURANTS**

**CITY OF LINCOLN
– DEFINITELY
WORTH THE 15
MINS DRIVE TO
SEE THE SHOPS
ON STEEP HILL
AND TOUR
LINCOLN
CATHEDRAL**

LOCAL FAMILY ATTRACTIONS



RAND FARM

WOODSIDE WILDLIFE PARK

WRAGBY MAZE

LINCOLN CASTLE AND CATHEDRAL

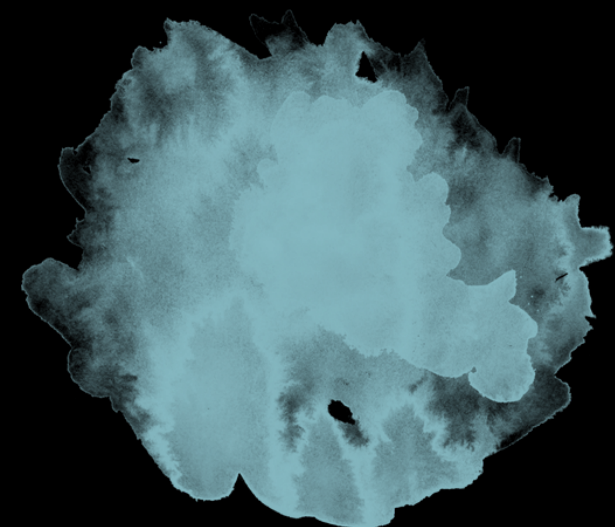
WHISBY WATER PARK

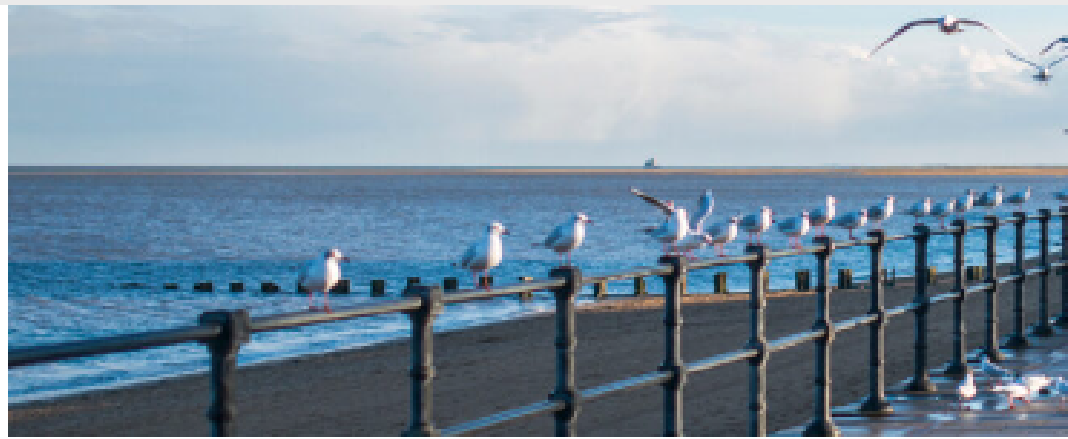
BEACHES
(WITHIN AN HOURS DRIVE)

MABLETHORPE
FANTASY ISLAND
CLEETHORPES
SKEGNESS



**WICKENBY MICROLIGHT
EXPERIENCE UNDER £60
1 MILE BEHIND HOUSE**

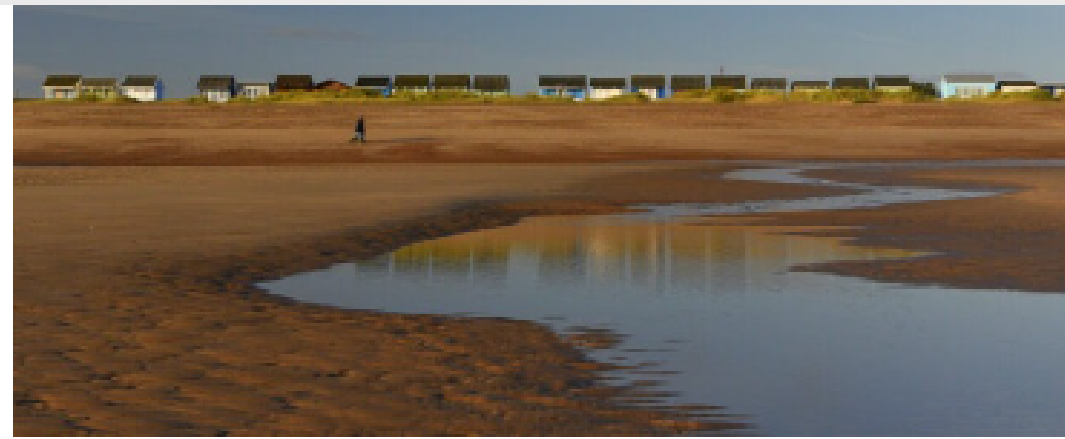




Cleethorpes Seafront Birdwatching

Cleethorpes seafront's location and variety of habitats make it attractive to numerous species, especially migrating and over-wintering...

📍 **CLEETHORPES**



Lincolnshire Coastal Country Park Birdwatching

The Lincolnshire Coastal Country Park is a stretch of 5 miles of coastline running from Sandilands to Chapel St Leonards, and inland to Hogsthorpe, Mumby, Anderby and...

📍 **SANDILANDS TO CHAPEL ST LEONARDS, AND INLAND TO HOGSTHORPE, MUMBY, ANDERBY AND HUTTOFT.**



Alkborough Flats Birdwatching

Alkborough Flats is the most north-westerly part of the historic County of Lincolnshire, at the confluence of the Rivers Trent and Ouse...

📍 **ALKBOROUGH, NEAR SCUNTHORPE**



Donna Nook National Nature Reserve Birdwatching



Saltfleetby-Theddlethorpe Dunes Birdwatching



Gibraltar Point Birdwatching

Gibraltar Point is undoubtedly one of the premier birding locations in Lincolnshire, with a wide variety of habitats and a high density of bird species.

The Stephen Langton Trail

Archbishop Stephen Langton, who originated from the tiny village of Langton by Wragby played a key negotiating role between King John and his barons. This Trail has been devised to celebrate the 800th anniversary of the sealing of Magna Carta in 1215.



It was only in the 1920s that Stephen Langton's birthplace was established with any certainty although it had always been known that he was of Lincolnshire stock.

Stephen Langton was perhaps the oldest of three sons of Henry Langton, a minor landowner with great respect for the church, and was born between 1150-1165; his father's house may well have been on the present moated manor site in Langton by Wragby. Of his early life we know little but his education may well have begun in Lincoln. However it is also possible that some of his time may have been spent at

Bullington Priory a mere three miles as the crow flies from his home. As a teenager (along with one of his brothers) Stephen went to Paris to study art and theology.

Paris was recognised internationally as a centre of learning so an education in France was not unusual. Gilbert of Sempringham, had done the same thing some eighty years earlier and he was the founder of the Gilbertine order, one of whose priories was at Bullington. Although in his eighties when Stephen was born Gilbert lived until 1189 so it is tempting to speculate that they may have met.

Stephen stayed in Paris for twenty-five years, establishing a reputation as a great



Limewoods



scholar. Amongst his many works was the revision of the order of the books in the bible and arranging them into the chapters with which we are familiar today. This meant that by 1207, as the most prominent living English churchman, he was consecrated as Archbishop of Canterbury by Pope Innocent III. This was the culmination of a long-running dispute between the Pope and King John following the death of the previous Archbishop Hubert Walter. Angered by the Pope's decision John refused to allow the new archbishop into England and so Stephen Langton was forced to remain in exile. Innocent III responded to this with an interdict excluding England from the church. An attempt at negotiation in 1209 failed but the king finally gave way by 1213.

King John remained in difficulty at home where the barons were unhappy with his heavy taxation and arbitrary use of the law. Archbishop Langton, concerned for the church became involved. He was therefore in the forefront of the campaign to affect some control over the monarchy and became the principal negotiator between the king and his barons. His influence

can therefore be detected, especially the charter's clause confirming ecclesiastical liberties.

By 1215 the barons were ready to take their stand against the king. Initially John refused their demands, however, in what amounted to civil war, once they captured London on 17 May 1215 he was left with little option but to meet and agree terms that would limit his power and make him, just as much as his subjects, answerable to the rule of his own laws.

At Runnymede on 15 June 1215 Archbishop Langton was in attendance as one of the King's Commissioners along with Bishop Hugh of Lincoln.

In another connection with his home county, Archbishop Langton was appointed by the Pope in 1219 to oversee the canonisation of Hugh of Avalon, an earlier Bishop of Lincoln who had died in 1200. That task he completed in 1220. Archbishop Stephen Langton died on 9th July 1228 and was buried at Canterbury.

PRACTICALITIES

Not everyone will want to walk the full 16.5 miles in one go. It has therefore been divided into three more manageable sections.

Despite being so close to Lincoln some of the route does cross quite isolated countryside. Unless a detour is made into Wragby early in Section 1 the only chance of refreshments before Lincoln is the inn at Fiskerton (end of Section 2 / start of Section 3). Plenty of choice once Lincoln is reached.

Self-sufficiency is therefore the order of the day - so be prepared! The route uses public rights of way throughout.

There is not much public transport access to the trail. Langton by Wragby lies conveniently on the Lincoln -

Horncastle - Skegness bus route (Service 6) with a bus stop only a few yards from the start. Fiskerton too lies on a bus route - the 15/15A services to Short Ferry. Consult the 'lincolnbus' and County Council websites. The countryside in between has no services so, unless sections 1 and 2 are done together two cars will be needed for the Apley / Thistle Storr Wood start / finish points; the only other option being a long 'walk in' from the A158 at Langworth.

The Ordnance Survey Maps covering the route are Landranger 121 (Lincoln) - which covers the whole route - and Explorers 273 (Lincolnshire Wolds South) and 272 (Lincoln). These latter two are strongly recommended for their greater detail.

**THE PROPERTY IN ITS
CURRENT FORM WAS
REBUILT IN THE 1840'S,
AND HAS HAD 6
OWNERS SINCE THEN.
THE PROPERTY WAS
LISTED IN 1966 WHICH
LIMITS THE SCOPE OF
THE GRADUAL
RESTORATIONS TAKING
PLACE THROUGHOUT
THE ESTATE.**



THECOUNTRYLIFE

BIOETHANOL FIRE SAFETY (IF PROVIDED)

THE MANUAL BURNER IS FILLED BY PUTTING AROUND A QUARTER OF A LITRE OF BIOETHANOL DIRECTLY INTO THE BURNER (HEXAGONAL LONG PART). ENSURE ANY SPILLAGES ARE WIPED AND REMOVED BEFORE LIGHTING THE FIRE.

IF YOU WANT TO REFILL A PREVIOUSLY LIT MANUAL BURNER, YOU MUST FIRST ENSURE THAT THE FLAME IS COMPLETELY EXTINGUISHED AND THE BURNER HAS BEEN ALLOWED TO COOL FOR 15-20 MINUTES BEFORE REFILLING.

THE BURNER IS IGNITED WITH A LIGHTER OR A MATCH. A LONGER VERSION OF EITHER WILL PREVENT YOU FROM BURNING YOUR FINGERS WHEN THE ETHANOL FIREPLACE IS IGNITED.

AFTER THE IGNITION OF THE BIOETHANOL FUEL, THE FLAMES CAN BE SMALL. AFTER A COUPLE OF MINUTES, THE FIREPLACE WILL BE WARM AND CREATE STUNNING FLAMES.

ONCE LIT, YOU WILL GET AROUND 3 - 4 HOURS FROM 1 LITRE OF FUEL; JUST MESSAGE TO PURCHASE MORE BIOETHANOL. THE BIOETHANOL HEATERS HERE COST BETWEEN £250 - £1100 AND CAN BE DAMAGED IF NON-BIOETHANOL FUEL IS USED.

**NO COOKING
OR HEATING
WITH GAS
INSIDE ANY
UNIT.**

Carbon Monoxide Kills !



ALWAYS ENSURE YOU HAVE ADEQUATE VENTILATION